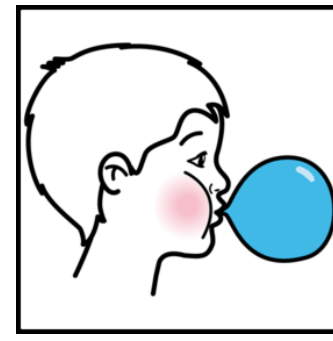
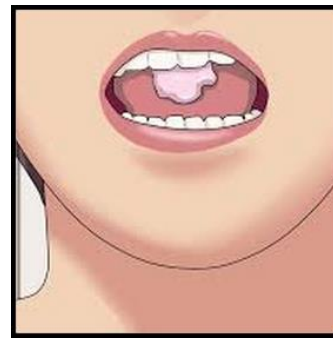
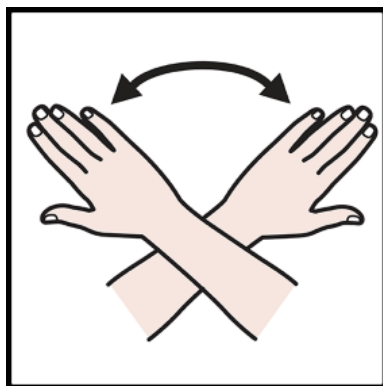


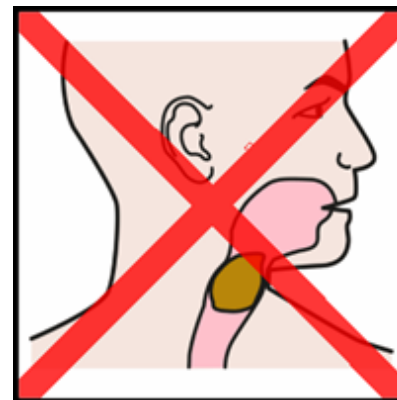
ME GUSTA EL CHICLE



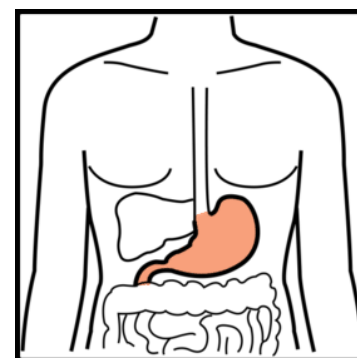
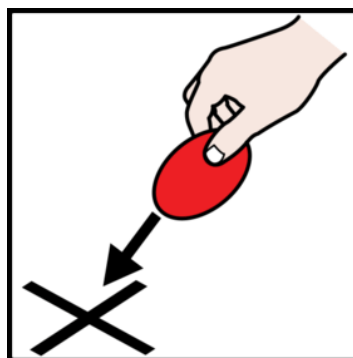
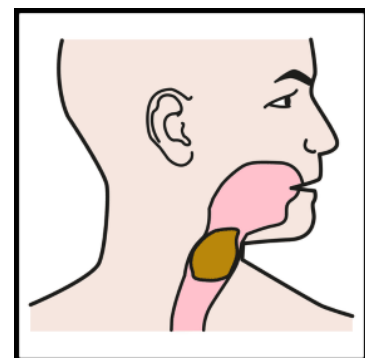
El chicle se puede masticar, chupar, mover con la lengua y hacer pompas



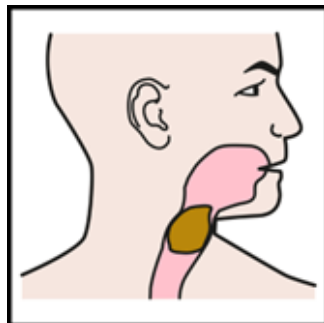
Al terminar tiro el chicle a la papelera



El chicle no se traga



Si me trago el chicle se pega al estómago y me duele la tripa



Si me trago el chicle no podré comer chicle



Voy a tirar el chicle a la papelera

¡Genial!